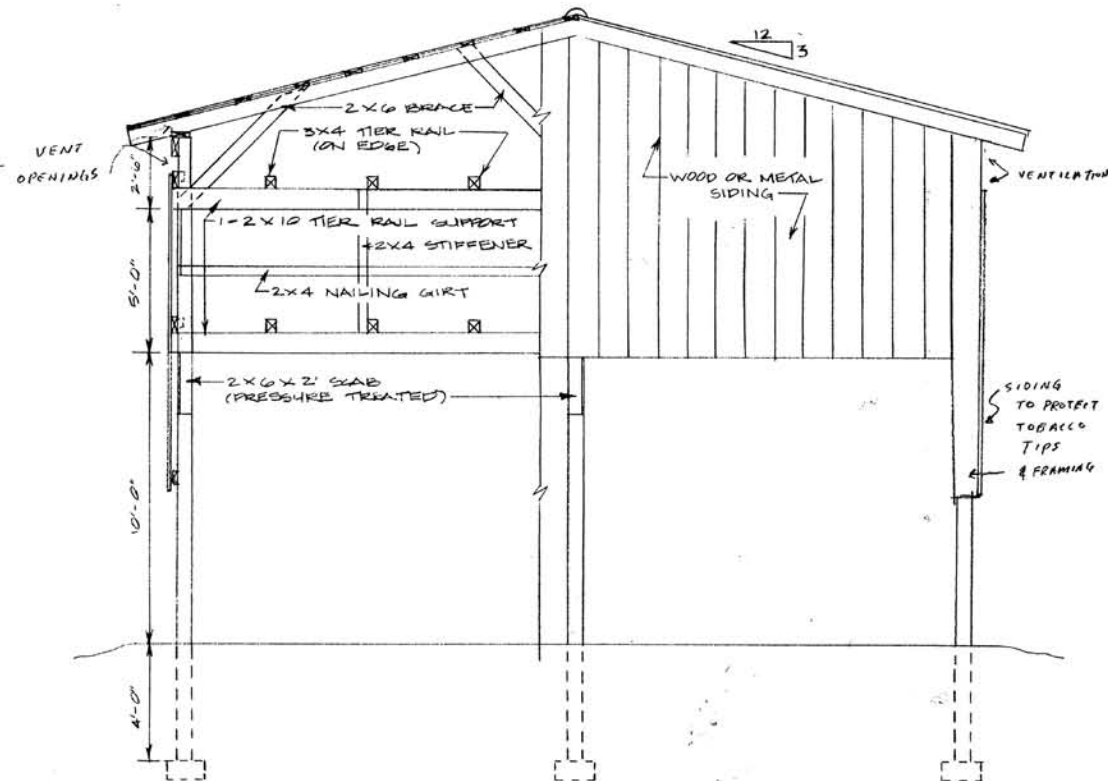


SIDE ELEVATION

SCALE: 1/4" = 1'-0"

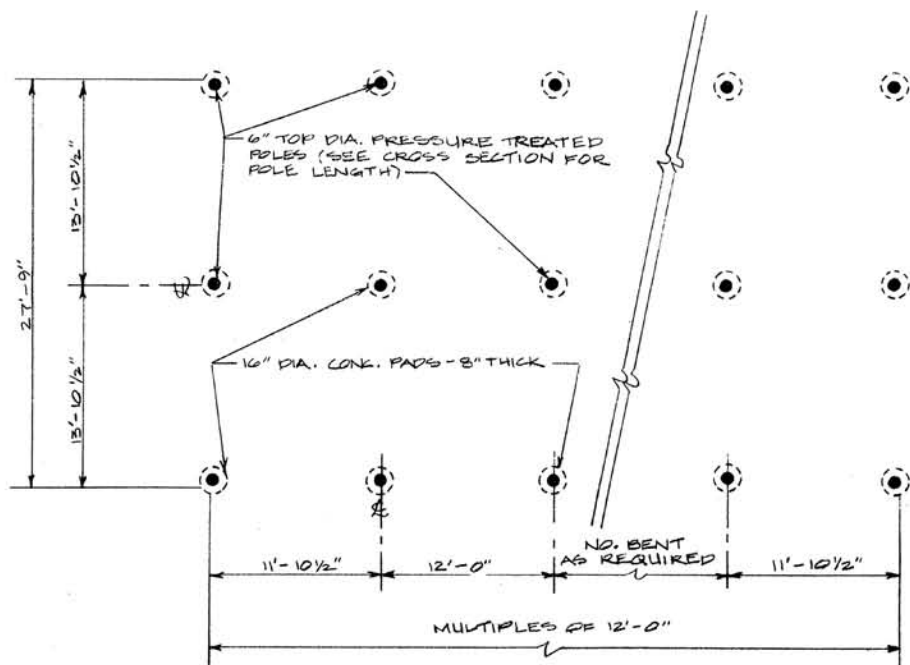


END ELEVATION

SCALE: 1/4" = 1'-0"

GENERAL DESCRIPTION

- NOTE 1. USE GOOD QUALITY FULL DIMENSION (F.D.) ROUGH SAWN LUMBER, OR DRESSED (S4S) LUMBER OF STANDARD GRADE DOUGLAS FIR, NO 2 SOUTHERN YELLOW PINE, EQUIVALENT OR BETTER, OF THE SIZES SPECIFIED ON THE PLANS.
- NOTE 2. USE OF KING SHANK OR SCREW SHANK POLE BARN NAILS IS RECOMMENDED FOR SUPERIOR HOLDING STRENGTH, ESPECIALLY FOR ALL CONNECTIONS TO PRESSURE TREATED POLES AND ALL SOFTWOOD LUMBER NAILING. USE 40d (5") NAILS FOR FRAMING (UNLESS OTHERWISE NOTED) TO PRESSURE TREATED POLE JOINTS, USE 16d (3 1/2") FOR ALL OTHER LUMBER FRAMING.
- NOTE 3. USE KING SHANK OR SCREW SHANK ROOFING NAILS WITH NEOPRENE WASHER OR LEAD UNDER-HEAD PER MFGG SPECS FOR ALL METAL ROOFING OR SIDING ATTACHMENT.



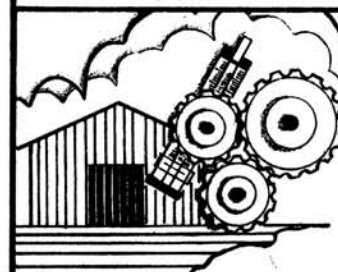
FLOOR PLAN

SCALE: 1/8" = 1'-0"

TABLE 1. APPROXIMATE BARN CAPACITY PER 12-FOOT BENT (28' WIDE - 16' TIER SPACES BENT)

STICK SPACING:	6 PLANTS/STICK			5 PLANTS/STICK		
	6"	5 1/2"	5"	6"	5 1/2"	5"
STICKS PER RAIL:	24	26	29	24	26	29
PLANTS PER ACRE	ACRES PER 12 FOOT BENT					
8,000	.29	.31	.35	.24	.26	.29
7,500	.31	.33	.37	.26	.28	.31

TWO-TIER PARTIALLY ENCLOSED AIR-CURE TOBACCO BARN



COOPERATIVE EXTENSION SERVICE
 AGRICULTURE AND HOME ECONOMICS
 DEPARTMENT OF AGRICULTURAL ENGINEERING
 COLLEGE OF AGRICULTURE
 UNIVERSITY OF KENTUCKY,
 AND
 U.S. DEPARTMENT OF AGRICULTURE COOPERATING

DESIGNED BY: J.N. WALKER
 CHECKED BY: G.A. DUNCAN
 DRAWN BY: S. ELLIOTT
 DATE: APRIL 74
 REVISIONS: JAN. '86

SHEET 1 OF 2

PLAN NUMBER

KY. II. 735-34